



Funded by  
European Union  
Humanitarian Aid  
and Civil Protection



# net risk work

## Workshop: structural components of running networks

**Yvonne Hengst-Ehrhart**

Forest Research Institute of Baden-Wuerttemberg  
Department of Forest Economics

NET RISK WORK – PROJECT MEETING  
Freiburg, 10<sup>th</sup> May 2017



Forest Research Institute  
Baden-Württemberg



PROTEZIONE CIVILE  
Regione Autonoma della Sardegna



# The importance social learning

## What makes the difference?

### Learning is more than accumulating knowledge

1. Own Experience
2. Observation and adaptation
3. Development of shared meanings and practices

*“Adults learn through everyday social practices rather than focusing on environments that are intentionally designed to support learning”. (Gray 2004)*

### Adults learn in social groups via

Conversation  
Storytelling  
Mentorship  
Lessons learned through experience

# Communities of Practice

## The concept

*Communities of practice are groups of people who share a concern or a passion for something they do and learn how to do it better as they interact regularly.*

### Differences from other communities



#### Domain

First, they focus on a domain of shared interest

#### Community

Second, they interact and learn together



#### Practice

Third, they develop a shared collection of experiences, stories, best practices etc.



# Communities of Practice

## A social learning concept

### Differences from other communities

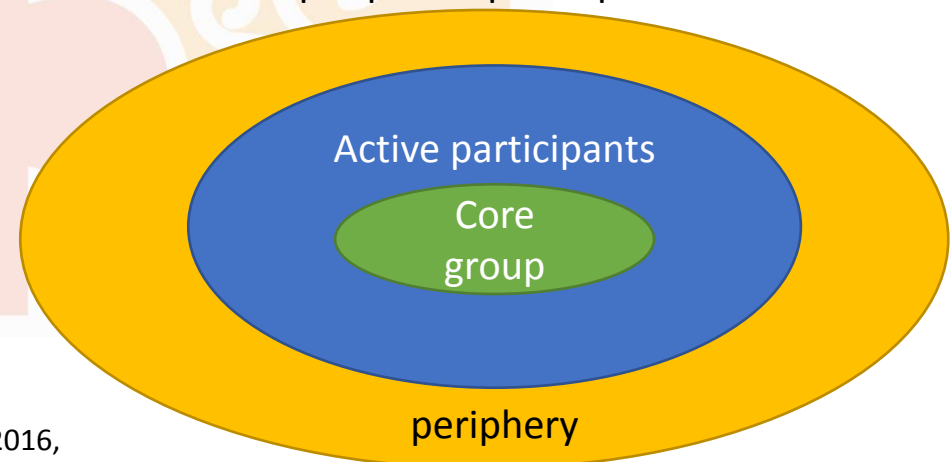
- First, they focus on a domain of shared interest
- Second, they interact and learn together
- Third, they develop a shared collection of experiences, stories, best practices etc.

### CoPs

- Often develop own their own (sports clubs, local interest groups etc.)
- Often are composed of members from different agencies, corporations, professions...

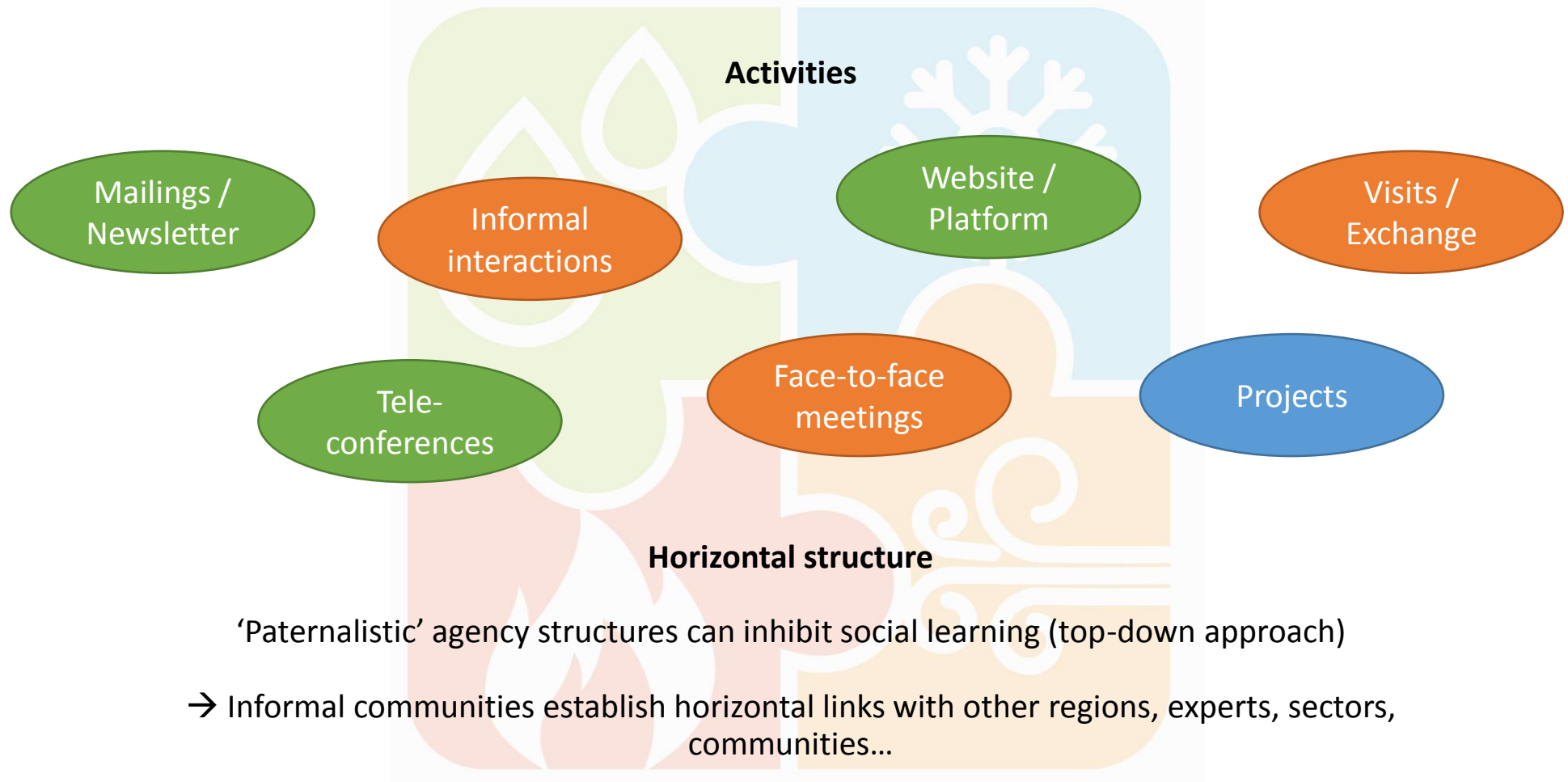
### Basic requirements

- Trusting relations in a voluntary network
- Interplay between experienced members (and newcomers)
- central participants maintaining the interaction with peripheral participants



# Communities of Practice

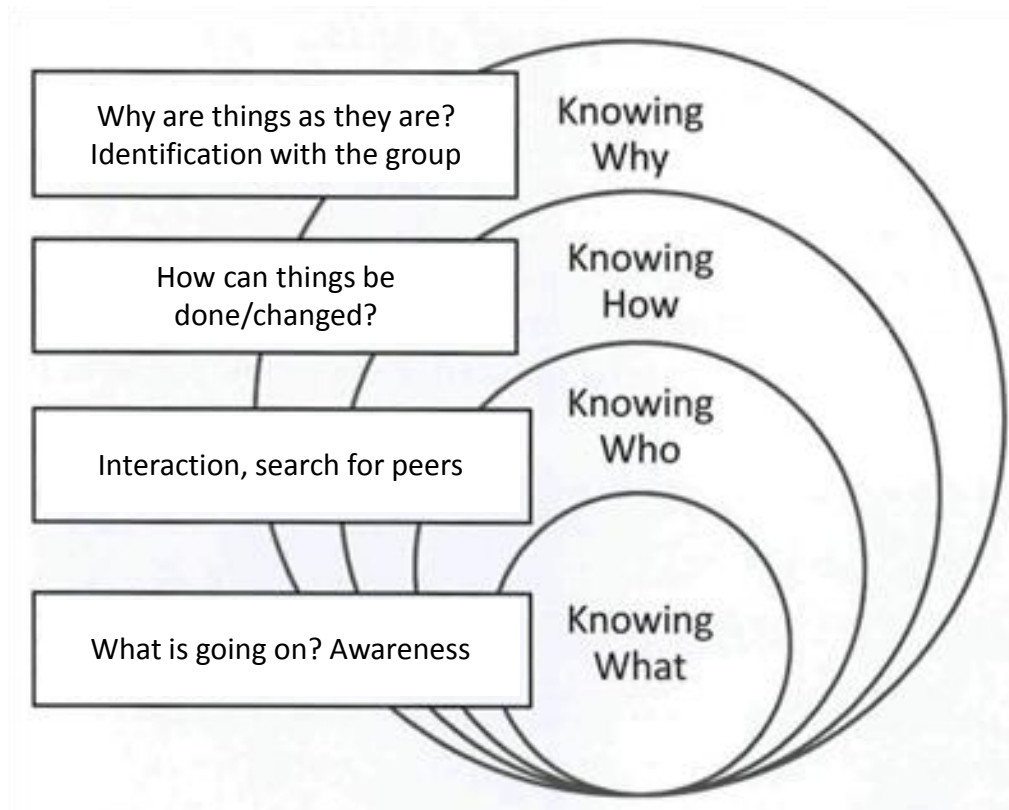
## How do they work?



# Communities of Practice

## How do they evolve?

### Development over time - levels of knowledge exchange



# Workshop / Discussion

## Question



What are the indicators of running networks?



Funded by  
European Union  
Humanitarian Aid  
and Civil Protection

# Thank you



# net risk work

