

NET RISK WORK

Engaging communities into risk management: The wildfire groups in UK

Rob Gazzard

Advisor, Technical Guidance, Contingency
Planning and Wildfire SMA
Forest Services

- Existing and future residential communities
- Land managers, foresters and nature conservation and advisors
- Local authorities (Emergency Planners and Local Planning Authorities)
- Fire and Rescue Services

Wildfire is defined as a risk in the following policy documents in the United Kingdom and England:

- **National Risk Register (2013, 2015 and 2016)**
- Climate Change Risk Assessment (CCRA 1 & 2)
 - High risk in both Natural England's and the Chief Fire Officers Association (CFOA) response to CCRA
- National Adaptation Programme (NAP)
- **National Planning Policy Framework (NPPF)** – Development Planning
- **UK Forestry Standard, Guidelines and Practice / Technical Guidance.**
- **Countryside Stewardship – England (P112)** - Lowland/Upland Mountain, Moor, Heath and Grassland Habitats
- **Forestry Environmental Impact Assessment (EIA)** (Deforestation) – Open Habitats Policy

Locally in England:

- **Community Risk Registers - Local Resilience Forums**
- Fire and Rescue Service's Integrated Risk Management Plans
- **Forest Management / Design Plans**

- Wildfire in the UK
- Fire behaviour
- The importance of planning
- Forest management plans
- The planning process
 - Scoping
 - Survey
 - Analysis
 - Synthesis
 - Implementation
 - Monitoring
 - Review
- Forest management techniques
 - Managing vegetation and fuels
 - Creating fire breaks and fire belts
 - Improving forest design
 - Building silvicultural resilience
 - Planning for people
 - Planning for an incident response



Practice Guide

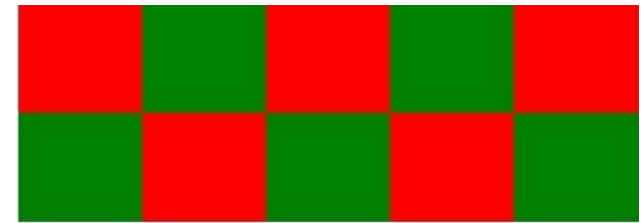
Building wildfire resilience into
forest management planning



Wildfire Forums – England & Wales and Scotland	National Government
Wildfire Groups	Local Government / Fire and Rescue Service

Membership:

- Water Companies,
- Private and Public Landowners,
- Countryside and Landowners Association (CLA),
- 7 x Fire and Rescue Services
- Local Authorities



SEEWG

South East England Wildfire Group

Aim:

- To create a forum between fire services, land management organisations and government that will provide strategic direction, planning and best practice to reduce the risks and hazards in the South East of England.

- Risk management in land management planning
- Risk management during wildfire incidents for landowners
- Risk management for existing communities
- Risk management for future communities

England defines wildfire as:

“Any uncontrolled vegetation fire which requires a decision, or action, regarding suppression.”

Definition taken from the Scotland Wildfire Operational Guidance:
<http://www.gov.scot/Publications/2013/10/6118>

Risk	Ref	Category	Risk Description	Overview of Risk	Risk Rating	Mitigation and Preparedness	Lead Agency
H	58	Natural Hazard	Wildfire	A severe wildfire spreading over an area of 1500 hectares at an urban-rural interface and lasting 7-10 days	Medium	<ul style="list-style-type: none"> • Work with landowners to reduce the scale of incidents that may occur. • Increase public awareness to reduce the numbers of heath land fires • Land owners emergency procedures • South East England Wildfire Group (Surrey Fire chair) • SFRS Wildfire Officers • SFRS specific off road vehicles and wildfire training • Site operators – emergency procedures • Site Clearance Plan 	Surrey Fire and Rescue Service

2017-2018

Surrey Community Risk Register



Surrey's
Local Resilience
Forum

Surrey Local Resilience Forum
Risk Assessment Working Group
2017-2018

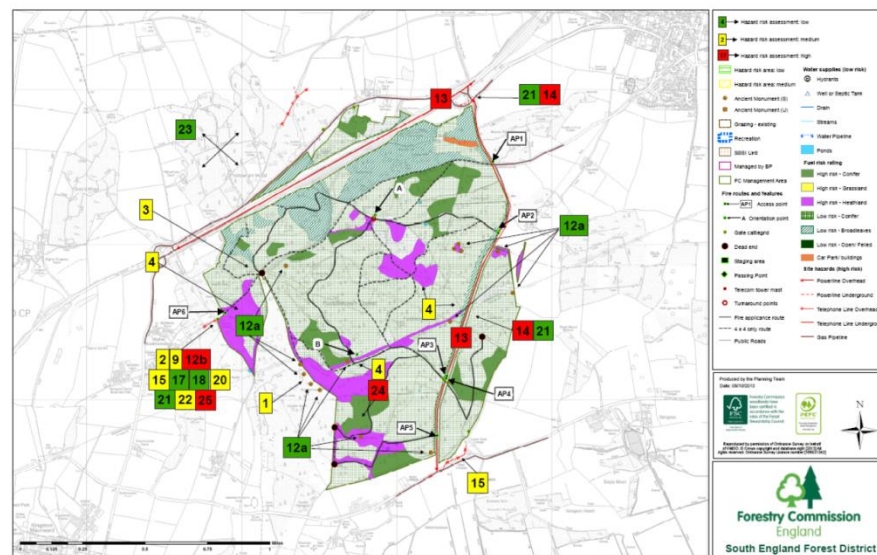
Risk management in land management planning

Wildfire Prevention Training

to over 100 staff across the following organisations:

- Forest Services
- Forest Enterprise
- Natural England
- Defence Infrastructure Organisation
- DFRMO
- Landmarc
- National Parks
- Local Authorities

Present Wildfire Risk Assessment
Puddletown



Risk management during wildfire incidents for landowners and fire fighters



Exercise Corsican Pine

Foresters and Firefighters working together to define risk and provide control measures

- Operational level

- Tactical level



Risk management for existing communities

Firewise Communities in:

- Thursley in Surrey
- Urban Heaths Partnership in Dorset



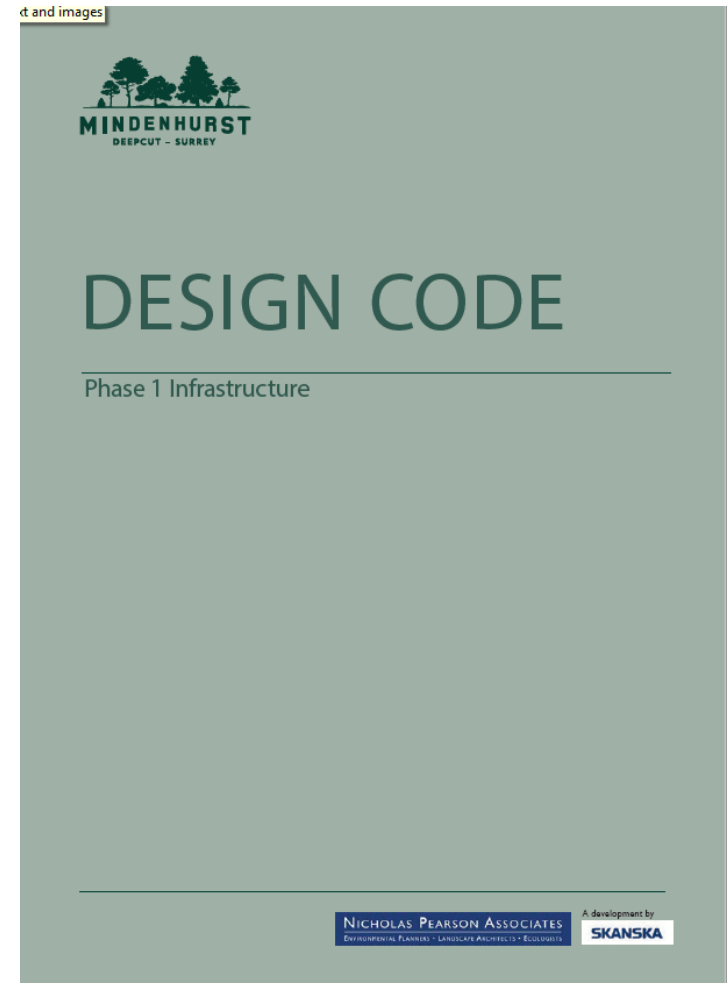
Risk manage for future communities

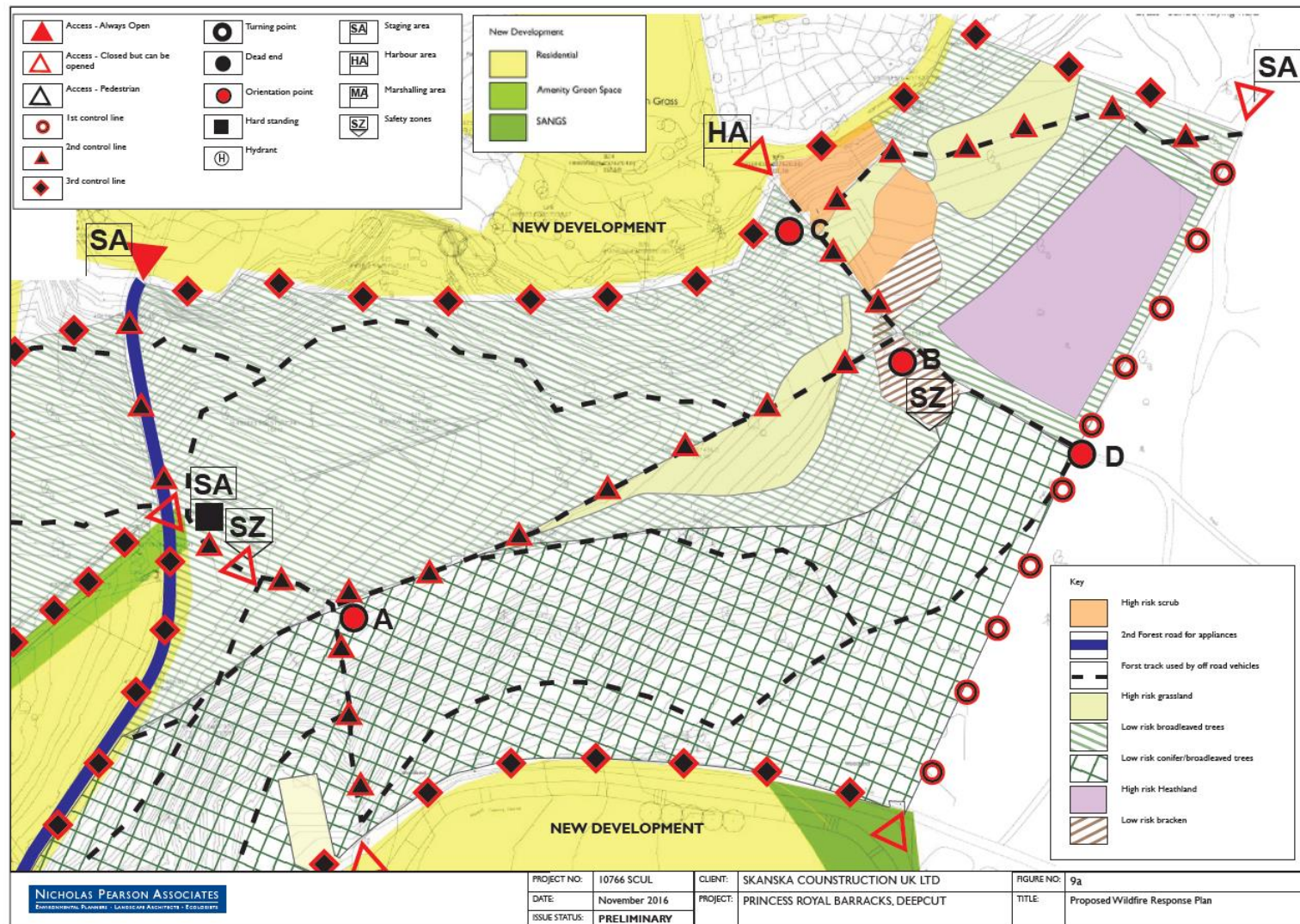


Policy 99. Local Plans should take account of climate change over the longer term, including factors such as flood risk, coastal change, water supply and changes to biodiversity and landscape. **New development should be planned to avoid increased vulnerability to the range of impacts arising from climate change.** When new development is brought forward in areas which are vulnerable, **care should be taken to ensure that risks can be managed through suitable adaptation measures, including through the planning of green infrastructure.**

Local Planning Authority detailed what the developer must provide:

- Wildfire mitigation and prevention
- This specifically defined in the 'Strategic Elements' and 'Detailed Elements' - Planning for wildfire





Thank you

Rob Gazzard

Adviser, Technical Guidance,
Contingency Planning
Wildfire Subject Matter Adviser

Bucks Horn Oak

Farnham

Surrey

GU10 4LS

07884 235688

rob.gazzard@forestry.gsi.gov.uk