



Funded by  
European Union  
Humanitarian Aid  
and Civil Protection



# net risk work

## Networking for the European Forest Risk Facility initiative

**PROGETTO G.I.A.N.O.**

**dell' Associazione Volontari di Protezione Civile San Pantaleo**

**11/04/2018**





net risk work



Funded by  
European Union  
Humanitarian Aid  
and Civil Protection

## L'ASSOCIAZIONE DI PROTEZIONE CIVILE SAN PANTALEO

- Nasce a seguito evento "Incendio Portisco" del 28/ agosto/ 1989;
- L'incendio ha causato 13 morti in località Milmejjju;
- Negli anni successivi i soci si specializzano in varie attività (Antincendio, Idrogeologico, Soccorso fluviale);
- Partecipa come Associazione di volontariato all'evento "Cleopatra" nel 2013;
- A seguito dell'evento Cleopatra 10 soci frequentano un corso di Soccorso Fluviale e ottengono il brevetto di 1° livello;
- Nel settembre 2015 l'Associazione partecipa al Bando di MediaFriends su fondi raccolti a seguito dell'evento Cleopatra





net risk work

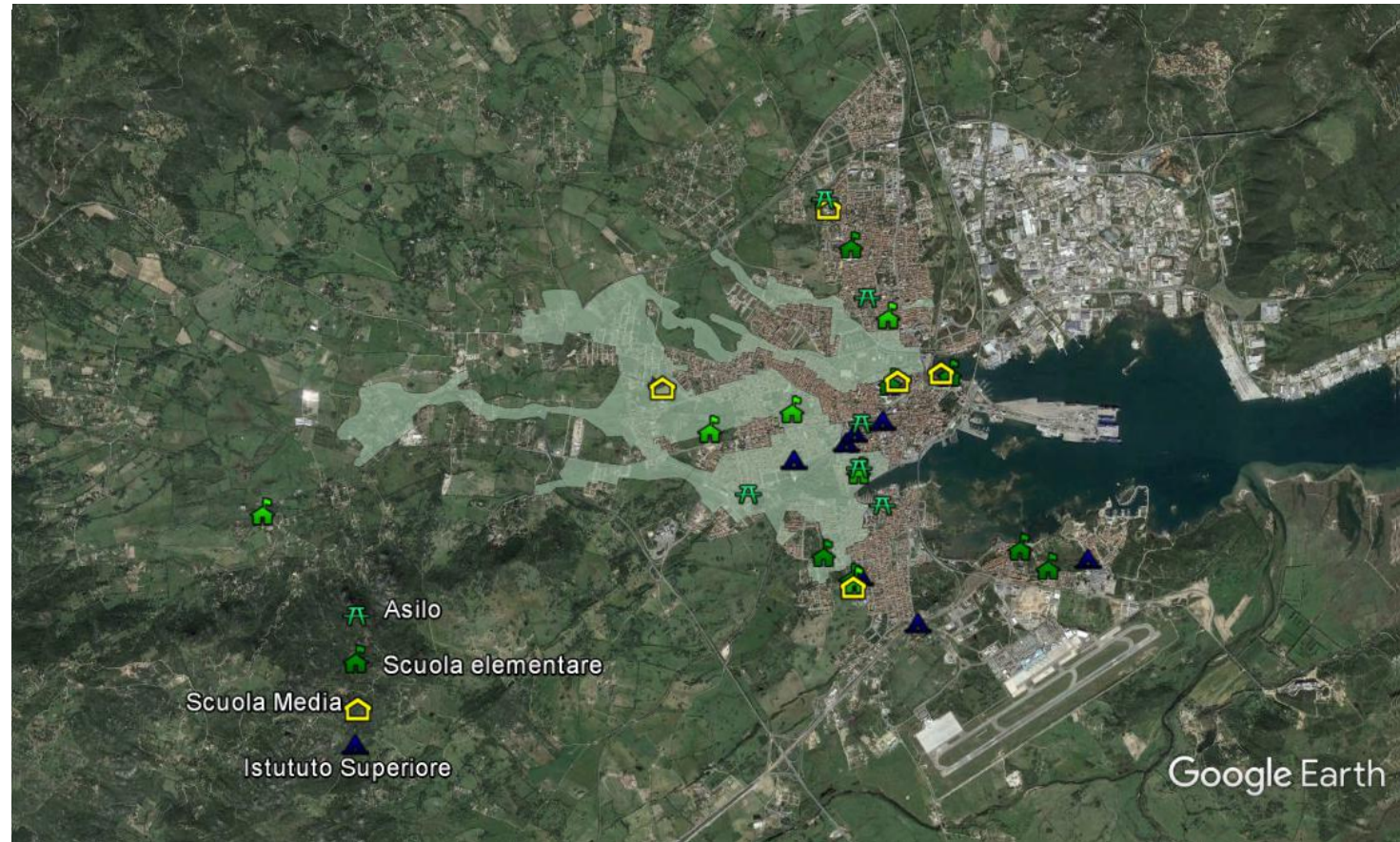
# OLBIA



Funded by  
European Union  
Humanitarian Aid  
and Civil Protection



- Olbia
- Olbia zona allagata
- Scuole ad Olbia



# Raccolta Fondi



**MEDIA FRIENDS**  
O N L U S

**740.000€**



**Progetto G.I.A.N.O**  
**270.000€**

**+**

**30.000€**




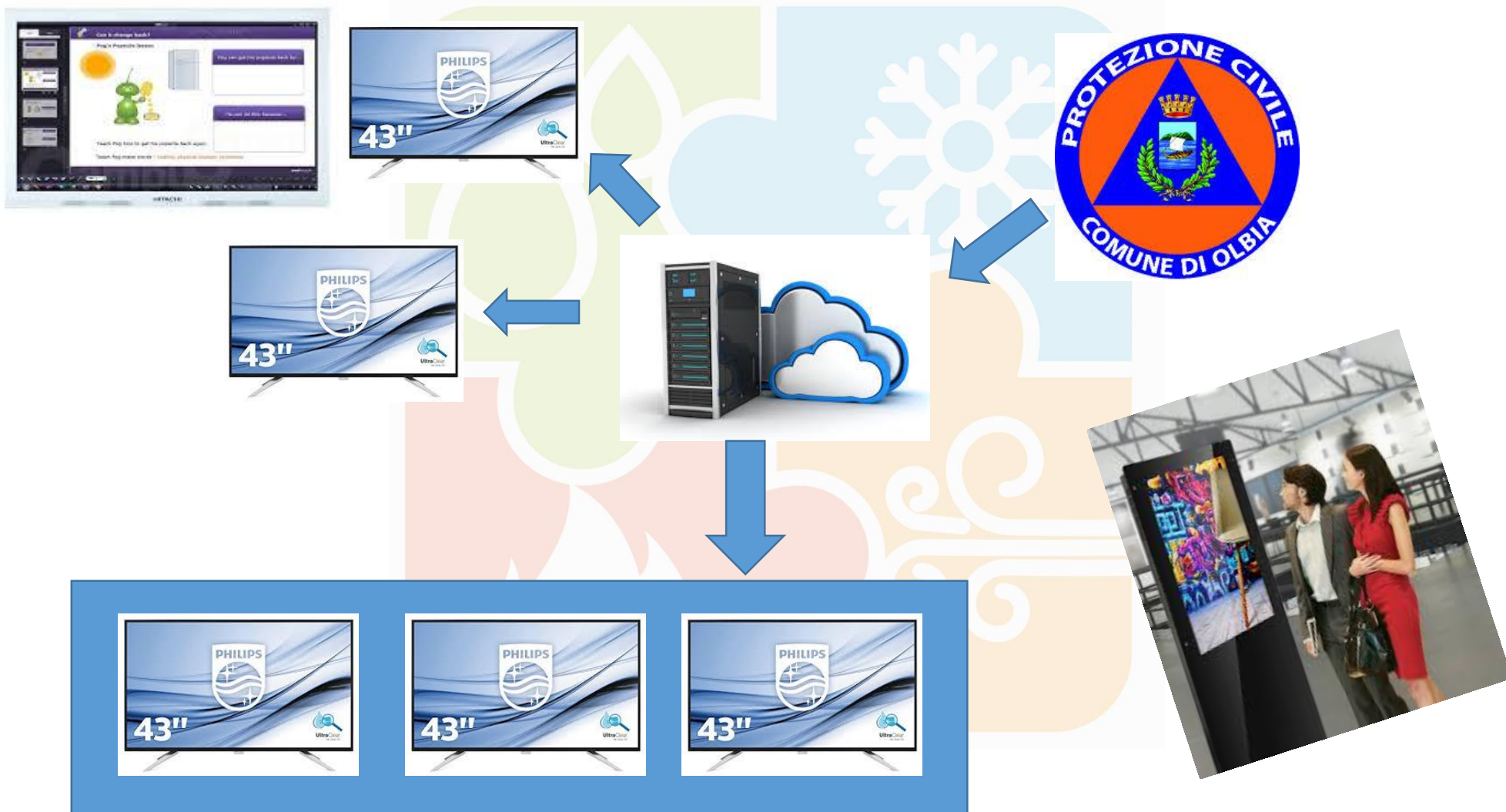
**300.000€**





# Formazione su : Psicologia nella Gestione Emergenze

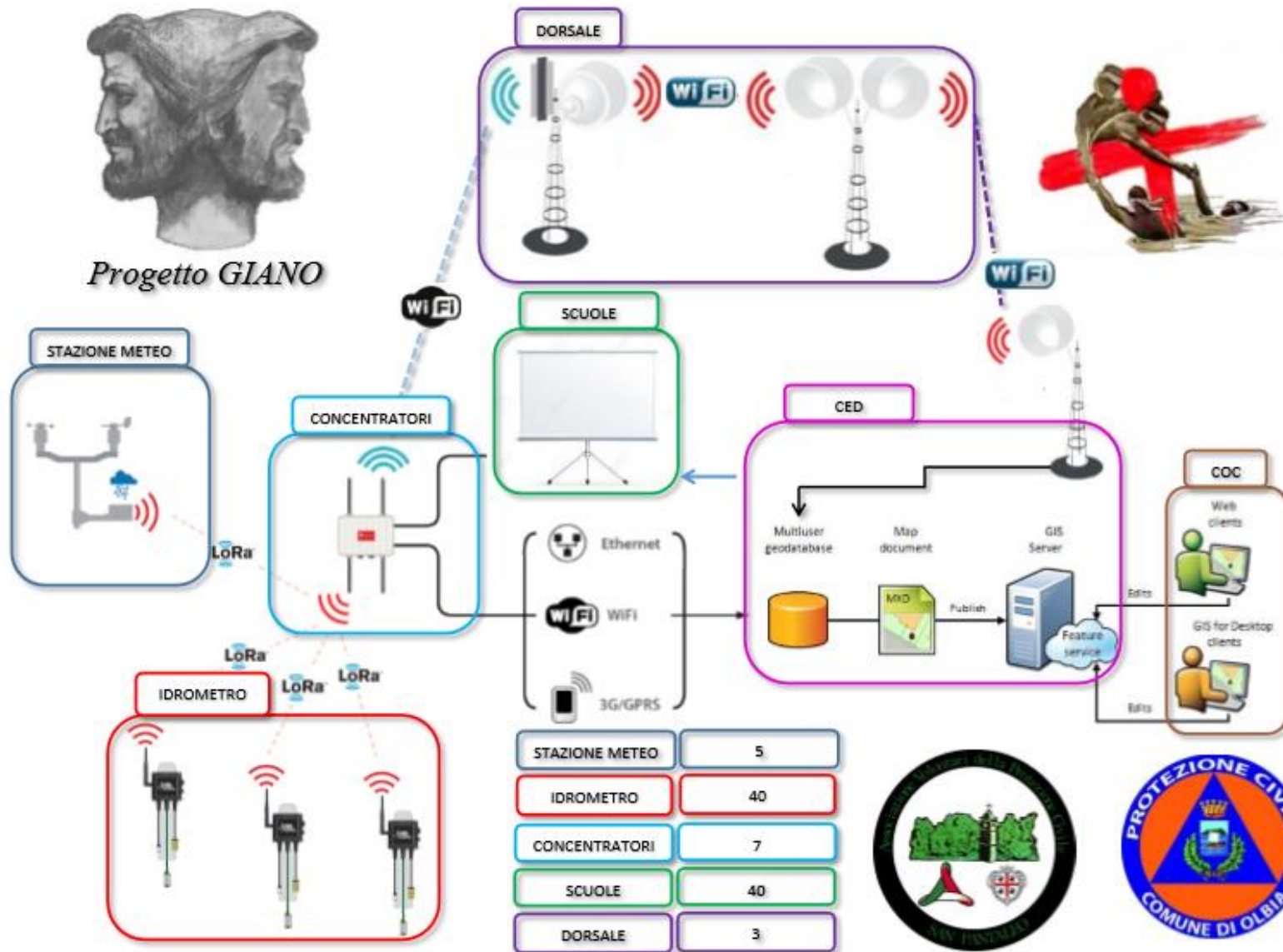
- 
- A 3D rendering of a training session. A red 3D figure stands on the right, pointing with a stick at a list on a grey board. The list contains three items: 'Corsi per insegnanti scuole elementari e scuole medie inferiori', 'Corsi per volontari', and 'Corsi personale COC'. On the left, several blue 3D figures are seated at white tables, facing the board. The scene is set on a white floor against a white background.
- Corsi per insegnanti scuole elementari e scuole medie inferiori
  - Corsi per volontari
  - Corsi personale COC



# Presidio Idraulico Idrogeologico



Progetto GLIANO





**net risk work**



Funded by  
European Union  
Humanitarian Aid  
and Civil Protection

Grazie per l'attenzione





Funded by  
European Union  
Humanitarian Aid  
and Civil Protection



# net risk work

## Networking for the European Forest Risk Facility initiative

**Silvia Fois**

**SO.S.A.GO - Soccorso Sant'Andrea Gonnese**

Cagliari, 11<sup>th</sup> April 2018





**net risk work**



Funded by  
European Union  
Humanitarian Aid  
and Civil Protection

# **BUILDING COMMUNITY DISASTER RESILIENCE: GOOD PRACTICES FROM CIVIL PROTECTION ASSOCIATION**



net risk work



Funded by  
European Union  
Humanitarian Aid  
and Civil Protection

# SO.S.A.GO

## Soccorso Sant'Andrea Gonnese

Volunteering association, linked to the Italian civil protection (Protezione civile).  
On our territory we deal with medical emergencies, rescue at sea and other support activities related to citizens security.





net risk work



Funded by  
European Union  
Humanitarian Aid  
and Civil Protection

## S.I.S.B.

### Secure Beach System

4 watch towers strategically located on the coast.

Every each one of them have specific buttons that allow to call for different services according to the emergency that needs to be dealt with.







net risk work



Funded by  
European Union  
Humanitarian Aid  
and Civil Protection

# S.I.S.B.

## Secure Beach System

We managed to optimise our interventions, making them quicker, more effective and halving waiting times, as desirable when dealing with emergencies.





net risk work



Funded by  
European Union  
Humanitarian Aid  
and Civil Protection

## N.I.S.E.

### Emergency Informatic Support Centre

The emergencies centre deals with emergencies management as well as sharing information on the web portal (<https://sosago.maps.arcgis.com>).

Thanks to the SISB funding we also managed to finance the NISE activities.





**net risk work**



Funded by  
European Union  
Humanitarian Aid  
and Civil Protection

# **S.I.T.S.E.**

## **Emergency System for Monitoring the Territory**

Our ideas are grounded in these values:

- Knowledge
- Prevention
- Territory
- Collaborations
- Managing
- Real-Time

# N.I.S.E.

## Emergency Informatic Support Centre

The team is composed by 4 volunteers:

- Doc Serra coordinates the NISE, managing the IT and relative systems (Geographic Information and Planning Support Systems);
- Doc Contini manages hardware and telecommunication, flies the drone;
  - Doc Foiss social media and communication manager;
- Mr. Podda is chief of control centre and operates drone images







net risk work



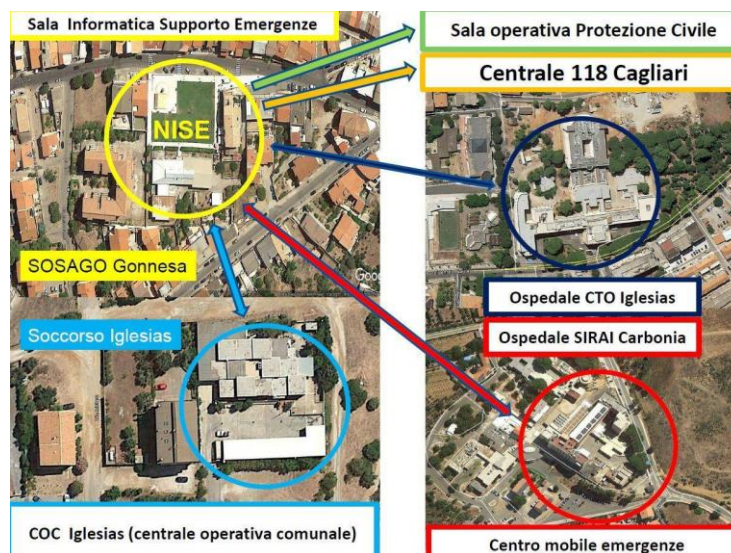
Funded by  
European Union  
Humanitarian Aid  
and Civil Protection

## N.I.S.E.

### Emergency Informatic Support Centre

Promptness in communication is a necessity when dealing with emergencies. Understanding the situation and sharing info with population and authorities are the keystone in our project.

We used this new system when the paediatric department moved from Carbonia Hospital to Iglesias. Thanks to our app, we monitored the ambulances movements, the traffic condition that could affect the relocation and send warning and messages when necessary.





**net risk work**



Funded by  
European Union  
Humanitarian Aid  
and Civil Protection

## **N.I.S.E.**

### **Emergency Informatic Support Centre**

Gonnesa Municipality, in collaboration with the SOSAGO's NISE, activated a SIT (territorial IT System) to gather and distribute geographic data and emergency warnings, managed by the operation centre SOSAGO headquarters, which is considered from now on, the focal managing point for emergency occurrences.

The research aims to improve the interventions time-effectiveness.



net risk work



Funded by  
European Union  
Humanitarian Aid  
and Civil Protection

## N.I.S.E.

### Emergency Informatic Support Centre

All the info is shared via interactive maps. The system might be consulted by the population, that may find data on geography, fire events, and other.

Timely communication and sharing do save human lives.

**Controllo Presidi Territoriali**  
NUCLEO INFORMATICO A SUPPORTO DELLE EMERGENZE

**Aggiungi foto**  
Aggiungere un massimo di 6 foto. Immagini più grandi saranno ridimensionate su 1024 pixel.

Scatta una foto  
Seleziona foto

**Aggiungi posizione**  
Spostare la mappa per ottimizzare la posizione.

Map showing location near Gonnese, Italy. Elevation: +19.4 m.

**Aggiungi dettagli**

Nome presidio  
Immettere un testo

Livello  
Allerta

Note  
Immettere un testo

Data  
Seleziona una data

**Seleziona tipo di report**

- Stazionario
- Crescente
- Decrescente
- Allerta (selected)

Nuovo report  
Report salvati

Successivo Successivo Salva Invia Successivo



**net risk work**



Funded by  
European Union  
Humanitarian Aid  
and Civil Protection

## **N.I.S.E.**

### **Emergency Informatic Support Centre**

In the future, we would like to make all info available for the population, allowing them to contribute to the flow of information because in any emergency situation, after the unskippable fact-checking, information sharing can and do make the difference.

We will not talk you through the detail info of the managing system, but a continuous research and funding are essential to develop new and even more effective tools as well as improving the decisional process.





**net risk work**



Funded by  
European Union  
Humanitarian Aid  
and Civil Protection



Thanks for your attention